

M SERIES - Revolve

Digital / Analog Solid State VHF Transmitter
1kW to 20kW and beyond



M SERIES - Revolve
Digital VHF - 1.75kW

Revolve. Take a New Look at VHF

M Series - Revolve captures the best of both worlds - integrating our renowned VHF combined with new digital technology, renewed style, features and options. M Series Revolve is the evolution of our Digital / Analog VHF Series.

Revolve integrates our simple and innovative approach to solid-state design to deliver unique digital solutions, custom-fit to your needs. With the proven performance of the original M Series, and the latest in innovative digital features - Revolve is a rugged and reliable choice for broadcasters, anywhere.

M Series - Revolve: Proven Design & Digital Innovation Defined.

Your best fit in Digital VHF!

Choose 1kW to 20kW and beyond!

- Worldwide Standards
 - Full Power Range in Analog or Digital
- State-of-the-art Broadband Design
 - Fault tolerant Stripline PA Architecture
- Innovative Digital Modulator
- Integrated System Diagnostics
 - Extensive Remote Control & Monitoring Capabilities with New In-SiNC Software
- Proven Linear Power Supplies
 - Rugged & Reliable
- Revolve combines the best of both worlds
 - Renowned design and new digital technology

M SERIES - Revolve

Digital / Analog Solid State VHF Transmitter

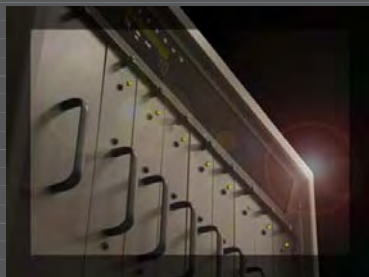
LOOK TO LARCAN FOR TRULY MADE TO MEASURE SOLUTIONS

The New M Series - Revolve is 'customer-fit' engineered to produce a superior digital signal - every time.

Revolve integrates the proven reliability of M Series - the original in state-of-the-art broadcast technology - with the latest in innovative distributed architecture design & diagnostics. The result is a dynamic new VHF solution, designed for the future of your broadcast success.

M Series - Revolve includes a full range of high performance TV broadcast transmitters for digital and analog, using LARCAN's proven solid state and broadband technologies. Performance-driven to ensure you a solid digital broadcast signal, Revolve combines the best of both worlds - renowned design and new digital technologies.

Revolve - Take a New Look at VHF
Your Best Fit in Digital. Anywhere.



M Series - Revolve 1.75kW Specifications

ATSC	Revolve: 1kW to 20kW and beyond	
Output	Power	1750W Avg. Digital Power
	Frequency	54-88 MHz 174-216 MHz
	Output Connector	1 5/8" EIA Unflanged
	Out-of-Band Emissions	FCC Mask
	Signal-to-Noise	30 dB
	EVM	3%
	Pilot Phase Noise	-105 dBc/Hz (20kHz offset)
	Precision Frequency Offset Option	Any offset, 1Hz step size
	Pilot Carrier Frequency Stability	±150 Hz
Input	Interface	SMPTE310M
	Bit Rate	19.39 MHz
	Symbol Clock Frequency	10.762238 MHz
	Impedance	75 ohms
General	Power Requirements	12 kVA
	Voltage	200 to 240 VAC 3 Phase 4 Wire
	Frequency	60 Hz
	Temp Range	0 to 45° C
	Dimensions (H x W x D)	78.5" x 27" x 44"
	Altitude	to 7500 ft.
	Humidity	95%
	Cooling	Forced Air
Remote Control Interface	Remote Control & Monitoring Capabilities with LARCAN In-SiNC Software	

New M Series - Revolve is the evolution of our Digital / Analog VHF Series. Developed with renowned M Series features such as broadband amplifier design, and linear power supplies - Revolve takes VHF to new levels for digital.

All of our Digital VHF transmitters are designed with LARCAN's world-renowned broadband solid state technology, FET-based amplifiers and unique broadband stripline combining techniques. The result is innovation - unprecedented levels of power density and superior linearity.

